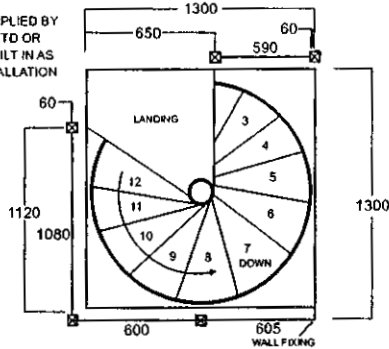


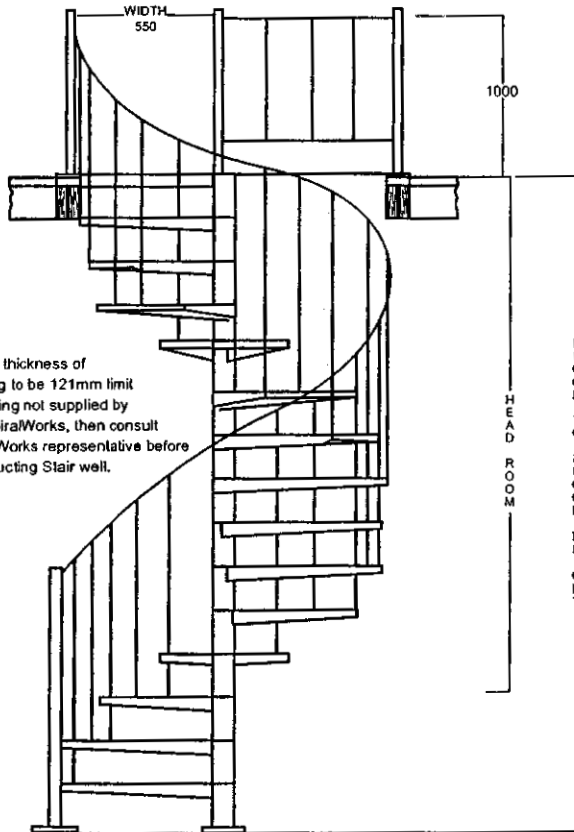
FINISHED OPENING CIRCULAR OR SQUARE

STEEL LANDING SUPPLIED BY
SPIRALWORKS PTY LTD OR
TIMBER LANDING BUILT IN AS
PART OF STAIR INSTALLATION

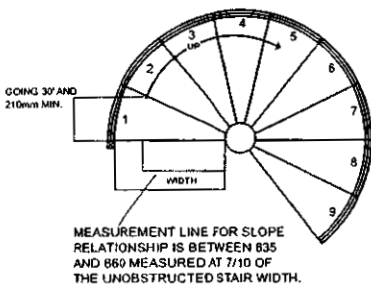


PLAN AT LANDING

STANDARD STAIRWELL AND BALCONY RAILS



Note: Overall thickness of
Landing to be 121mm limit
If Landing not supplied by
The SpiralWorks, then consult
Spiral Works representative before
Constructing Stair well.



CONSTRUCTION SPECIFICATIONS

Stair Components

Centre Column 114.3 O.D X 4.3 mild steel pipe

Steel Treads

4mm mild steel plate

Laser cut & folded to uniform size with rubber tread overlay as standard.

Stair Handrail

Handrail 32mm round, unbroken PVC.

Balusters 19x1.6 square tubing with a maximum spacing of 125 Handrail posts, top & bottom 50x50x1.6 SHS continuous & uninterrupted handrail is provided on one side of stair with a minimum height above the tread nosing of 865mm.

Balcony Railing

End posts 50x50 1.6SHS

Top rail 32mm round mild steel

Bottom rail & fills 19x1.6 square tubing

Balcony rails are at a minimum height of 1000 above floor Balusters are spaced with maximum gap of 125mm.

Treads

Are uniform in shape & size. Risers are uniform in height & vary between 205 - 220 according to site measurement width of stairs, tread free of obstruction 525.

Stair Geometry

Stair has risers between 205 - 220 12 steps to circle at 30 degrees.

The going measured at 7/10 ths of clear width is 210 minimum.

The slope relationship is between 635 & 660

Stair can be erected clockwise or anti clockwise & is mechanically joined on site.

Headroom

Using a standard 60 degree landing with a 75mm

downturn with 205 minimum riser clear headroom is 2080.

Every 1mm added to riser, adds 12mm to headroom.

Kit Form

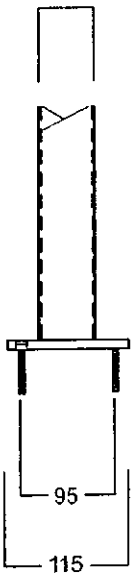
The stair & handrail are kit - form. There is no welding, cutting or grinding required. This allows for easy installation on any finished floor surface.

This system is covered by Registered Design No's:

157138 & 150823 & may not be manufactured or copied, without the written consent of The Spiral Works Pty Ltd.

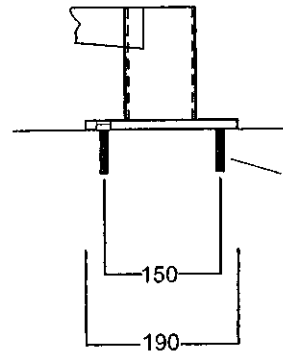
DETAILS OF FIXING

50 SQ X 1.6 SHS



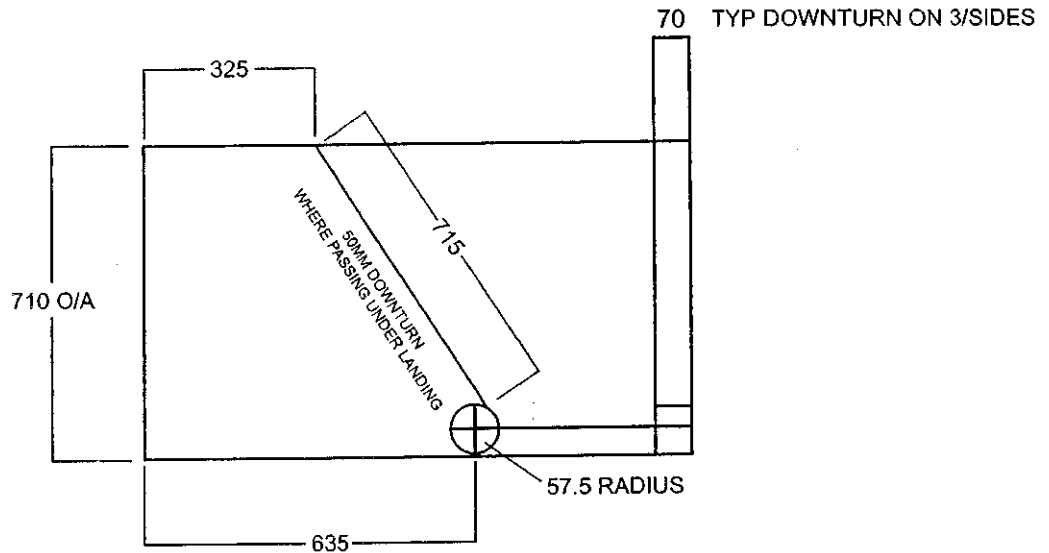
4 No. C'SK. SCREWBOLTS 75 X 8MM
DRILL 8mm HOLE FOR MASONRY
DRILL 7MM HOLE FOR TIMBER

HANDRAIL POST BASE



4 No. C'SK. SCREWBOLTS 75 X 8MM
on 150mm PCD
DRILL 8mm HOLE FOR MASONRY
DRILL 7MM HOLE FOR TIMBER

BASE PLATE



LANDING DETAIL

EXAMPLES ONLY OF SETOUT - WE BUILD TO SUIT

1300 Diameter 208mm to 220mm Riser 12 Treads to Circle at 30'

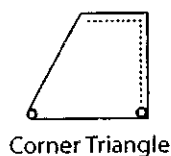
Floor to Floor Height	2640	2860	3080	3300	3520	3740	3960	4180	4400	4620	4840
Number of Risers	12	13	14	15	16	17	18	19	20	21	22
Number of Treads	11	12	13	14	15	16	17	18	19	20	21
Going	330	360	390	420	450	480	510	540	570	600	630

12 Steps to Circle at 30'

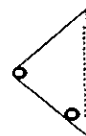


Landing Examples

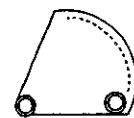
----- Dotted line denotes fixing face



Corner Triangle



Balcony Triangle



Round Triangle