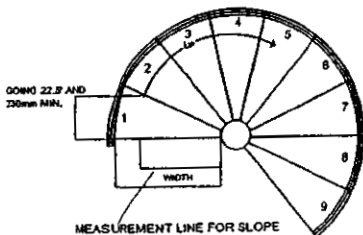
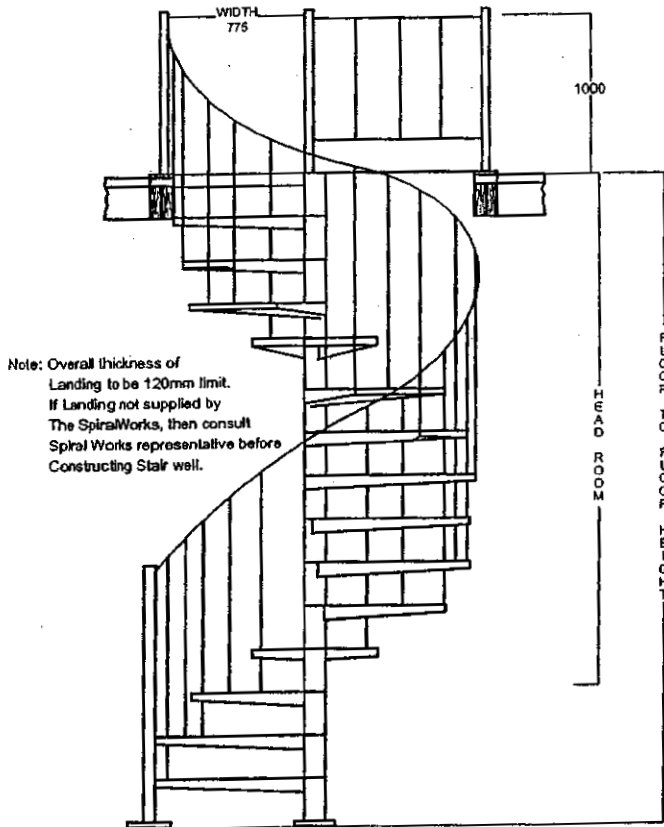


PLAN AT LANDING
STANDARD STAIRWELL AND BALCONY RAILS



PLAN AT BASE
16 Treads of 22.5° in circle

CONSTRUCTION SPECIFICATIONS

Stair Components

Centre Column 114.3 O.D X 4.3 mild steel pipe

Steel Treads

4mm mild steel plate
Laser cut & folded to uniform size with 35mm timber tread overlays as standard.

Stair Handrail

Handrail 32mm round, unbroken PVC.
Balusters 19x1.6 square tubing with a maximum spacing of 125 Handrail posts, top & bottom 50x50x1.6 SHS continuous & uninterrupted handrail is provided on one side of stair with a minimum height above the tread nosing of 865mm.

Balcony Railing

End posts 50x50 1.6SHS
Top rail 32mm round mild steel
Bottom rail & fills 19x1.6 square tubing
Balcony rails are at a minimum height of 1000 above floor
Balusters are spaced with maximum gap of 125mm.

Treads

Are uniform in shape & size. Risers are uniform in height & vary between 183 - 195 according to site measurement width of stairs, tread free of obstruction 760.

Stair Geometry

Stair has risers between 183 - 195 16 steps to circle at 22.5 degrees.
The going measured at 7/10 ths of clear width is 210 minimum.
The slope relationship is between 588 & 608
Stair can be erected clockwise or anti clockwise and is mechanically joined on site.

Headroom

Using standard landing with timber top 75mm thick with every 183 riser, clear headroom is 2060.
Every 1mm added to riser, adds 12mm to headroom.

Painting

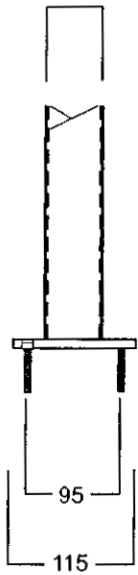
Powder coated choice of 36 colours

Kit Form

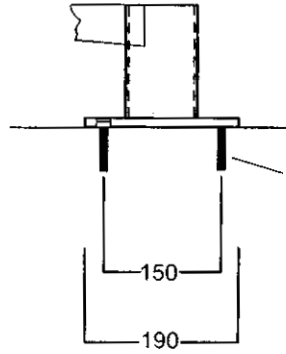
The stair & handrail are kit - form. There is no welding, cutting or grinding required. This allows for easy installation on any finished floor surface. This system is covered by Registered Design No: 150823 & may not be manufactured or copied, without the written consent of The Spiral Works Pty Ltd.

DETAILS OF FIXING

50 SQ X 1.6 SHS



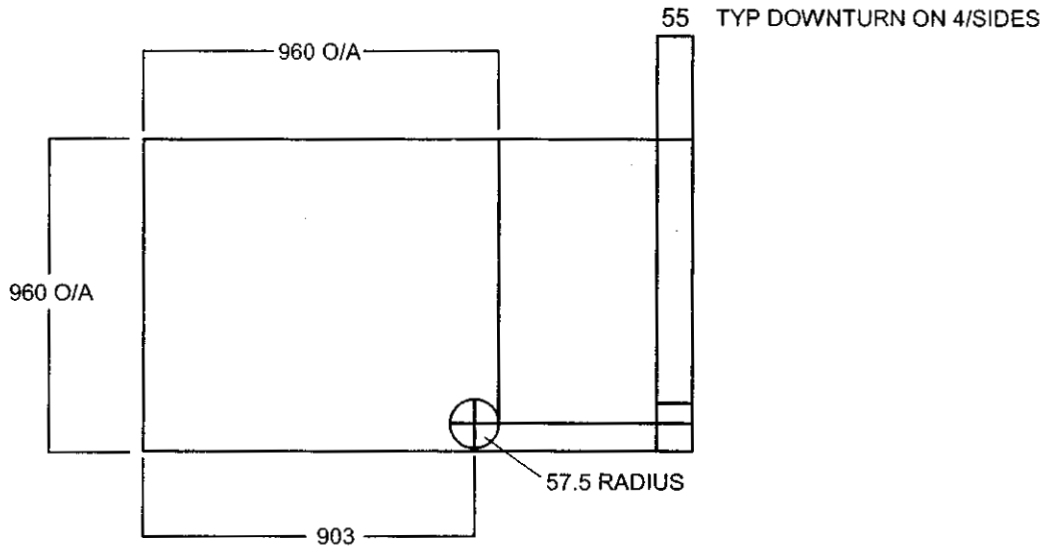
4 No. C'SK. SCREWBOLTS 75 X 8MM
DRILL 8mm HOLE FOR MASONARY
DRILL 7MM HOLE FOR TIMBER



4 No. C'SK. SCREWBOLTS 75 X 8MM
on 150mm PCD
DRILL 8mm HOLE FOR MASONARY
DRILL 7MM HOLE FOR TIMBER

BASE PLATE

HANDRAIL POST BASE



LANDING DETAIL

EXAMPLES ONLY OF SETOUT - WE BUILD TO SUIT

1800 Diameter

183mm to 190mm Riser 16 Treads to Circle at 22.5°

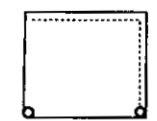
Floor to Floor Height	2320	2510	2700	2890	3080	3270	3460	3650	3840	4030	4220
Number of Risers	12	13	14	15	16	17	18	19	20	21	22
Number of Treads	11	12	13	14	15	16	17	18	19	20	21
Going	247	270	292	315	337	360	382	405	427	450	472

16 Steps to Circle at 22.5°

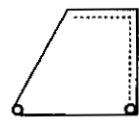


Landing Examples

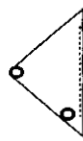
— Dotted line denotes fixing face



Corner square



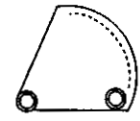
Corner Triangle



Balcony Triangle



Cantilever



Round Triangle