

**CONSTRUCTION SPECIFICATIONS**

**Stair Components**

Centre Column 114.3 O.D X 4.3 mild steel pipe

**Steel Treads**

4mm mild steel plate  
Laser cut & folded to uniform size with rubber tread overlay as standard.

**Stair Handrail**

Handrail 32mm round, unbroken PVC.  
Balusters 19x1.6 square tubing with a maximum spacing of 125 Handrail posts, top & bottom 50x50x1.6 SHS continuous & uninterrupted handrail is provided on one side of stair with a minimum height above the tread nosing of 865mm.

**Balcony Railing**

End posts 50x50 1.6SHS  
Top rail 32mm round mild steel  
Bottom rail & fills 19x1.6 square tubing  
Balcony rails are at a minimum height of 1000 above floor  
Balusters are spaced with maximum gap of 125mm.

**Treads**

Are uniform in shape & size. Risers are uniform in height & vary between 205 - 220 according to site measurement width of stairs, tread free of obstruction 525.

**Stair Geometry**

Stair has risers between 205 - 220 12 steps to circle at 30 degrees.  
The going measured at 7/10ths of clear width is 210 minimum.  
The slope relationship is between 635 & 660  
Stair can be erected clockwise or anti clockwise & is mechanically joined on site.

**Headroom**

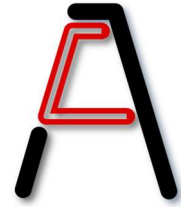
Using a standard 60 degree landing with a 75mm downturn with 205 minimum riser clear headroom is 2080.  
Every 1mm added to riser, adds 12mm to headroom.

**Kit Form**

The stair & handrail are kit - form. There is no welding, cutting or grinding required. This allows for easy installation on any finished floor surface.  
This system is covered by Registered Design No's: 157138 & 150823 & may not be manufactured or copied, without the written consent of The Spiral Works Pty Ltd.

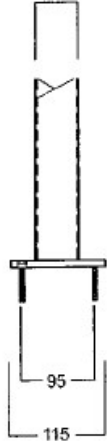
**INFORMATION FACT SHEET**  
**1300 / 12 SPIRAL STAIRS**

© The Spiral Works Pty Ltd 2007  
® Registered Design Nos: 157138 & 105823  
\*Stairs Comply with BCA \*All states & Territories



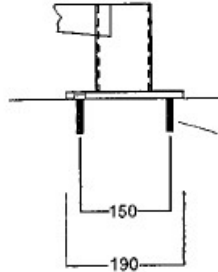
**DETAILS OF FIXING**

50 SQ X 1.6 SHS



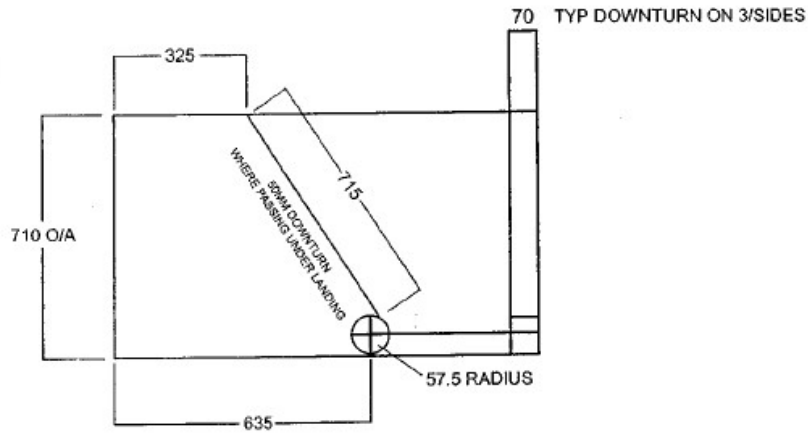
4 No. C'SK. SCREWBOLTS 75 X 8MM  
DRILL 8mm HOLE FOR MASONRY  
DRILL 7MM HOLE FOR TIMBER

**HANDRAIL POST BASE**



4 No. C'SK. SCREWBOLTS 75 X 8MM  
on 150mm PCD  
DRILL 8mm HOLE FOR MASONRY  
DRILL 7MM HOLE FOR TIMBER

**BASE PLATE**



**LANDING DETAIL**

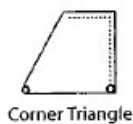
**EXAMPLES ONLY OF SETOUT - WE BUILD TO SUIT**

1300 Diameter      208mm to 220mm Riser    12 Treads to Circle at 30'

<b>Floor to Floor Height</b>	2640	2860	3080	3300	3520	3740	3960	4180	4400	4620	4840
<b>Number of Risers</b>	12	13	14	15	16	17	18	19	20	21	22
<b>Number of Treads</b>	11	12	13	14	15	16	17	18	19	20	21
<b>Going</b>	330	360	390	420	450	480	510	540	570	600	630
<b>12 Steps to Circle at 30'</b>											

Landing Examples

— Dotted line denotes fixing face



Corner Triangle



Balcony Triangle



Round Triangle



**INFORMATION FACT SHEET**  
**1300 / 12 SPIRAL STAIRS**

AUSTRALIAN LEADING SPIRAL DESIGNERS