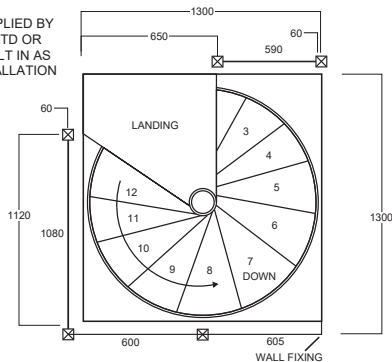
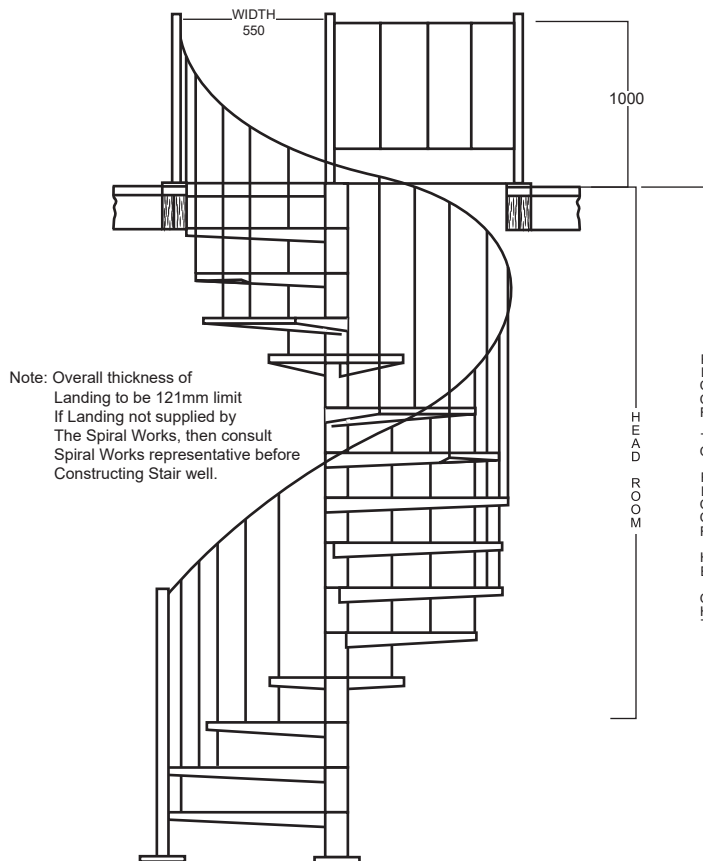


## FINISHED OPENING CIRCULAR OR SQUARE

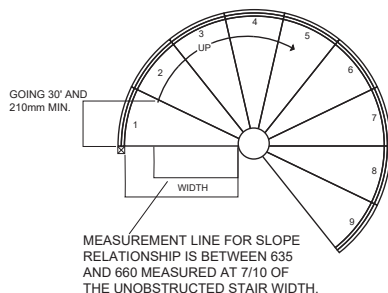
STEEL LANDING SUPPLIED BY SPIRAL WORKS PTY LTD OR TIMBER LANDING BUILT IN AS PART OF STAIR INSTALLATION



## PLAN AT LANDING STANDARD STAIRWELL AND BALCONY RAILS



Note: Overall thickness of Landing to be 121mm limit. If Landing not supplied by The Spiral Works, then consult Spiral Works representative before Constructing Stair well.



## CONSTRUCTION SPECIFICATIONS

### Stair Components

Centre Column 114.3 O.D X 4.5 mild steel pipe

### Steel Treads

4mm mild steel plate

Laser cut & folded to uniform size with 20mm nut & bolt to fasten down each rubber tread overlay as standard.

### Stair Handrail

Handrail 32 x 5mm round, unbroken PVC.

Balusters 19x1.6 square tubing with a maximum spacing of 125. Handrail posts, top & bottom 40x40x1.6 SHS Grade 450 continuous & uninterrupted handrail is provided on one side of stair with a minimum height above the tread nosing of 865mm.

### Balcony Railing

End posts 40x40x1.6 SHS Grade 450

Top rail 32 x 1.6mm round mild steel

Bottom rail & in fills 19x1.6 square tubing

Balcony rails are at a minimum height of 1000 above floor. Balusters are spaced with maximum gap of 125mm.

### Treads

Are uniform in shape & size. Risers are uniform in height & vary between 205 - 220 according to site measurement. Width of stairs, tread free of obstruction 525.

### Stair Geometry

Stair has risers between 205 - 220. 12 steps to circle at 30 degrees.

The going measured at 7/10ths of clear width is 210 minimum.

The slope relationship is between 635 & 660.

Stair can be erected clockwise or anti clockwise & is mechanically joined on site.

### Headroom

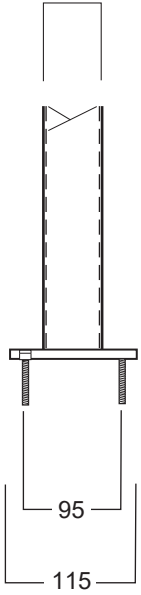
Using a standard 60 degree landing with a 95mm downturn with 205 minimum riser clear headroom is 2080. Every 1mm added to riser, adds 12mm to headroom.

### Kit Form

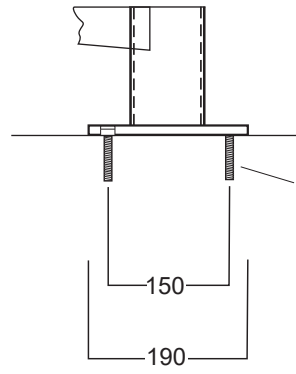
The stair & handrail are kit - form. There is no welding, cutting or grinding required. This allows for easy installation on any finished floor surface.

This system is covered by Registered Design No's: 157138 & 150823 & may not be manufactured or copied, without the written consent of The Spiral Works Pty Ltd.

40 X 40 X 1.6 SHS Grade 450



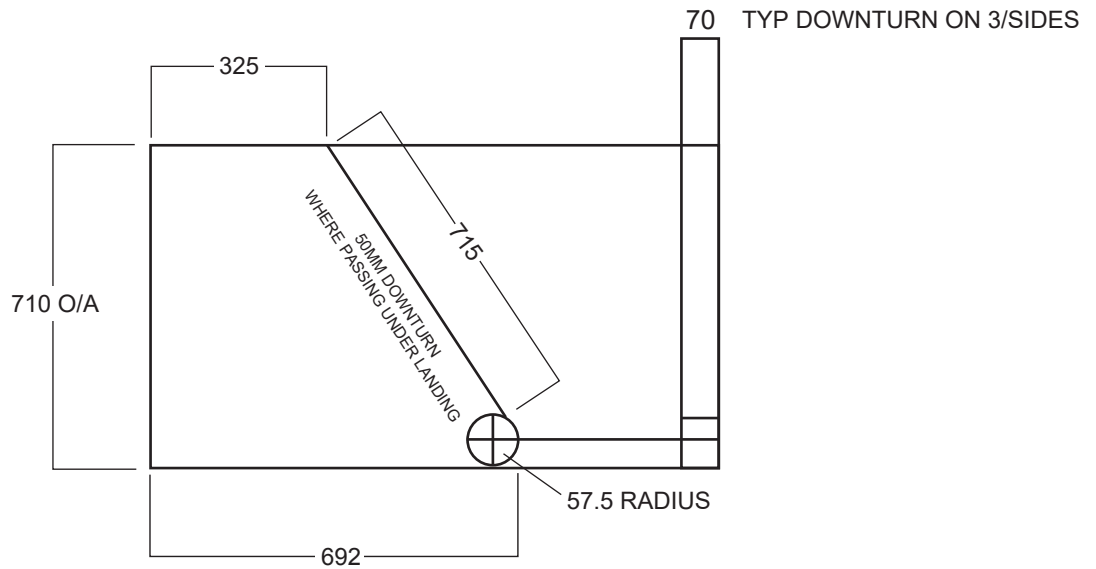
4 No. C'SK. SCREWBOLTS 75 X 8MM  
DRILL 8mm HOLE FOR MASONARY  
DRILL 7MM HOLE FOR TIMBER



4 No. C'SK. SCREWBOLTS 75 X 8MM  
on 150mm PCD  
DRILL 8mm HOLE FOR MASONARY  
DRILL 7MM HOLE FOR TIMBER

**BASE PLATE**

**HANDRAIL POST BASE**



**LANDING DETAIL**

EXAMPLES ONLY OF SETOUT - WE BUILD TO SUIT

1300 Diameter

205mm to 220mm Riser 12 Treads to Circle at 30'

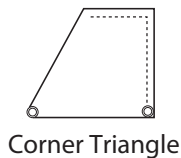
Floor to Floor Height	2630	2850	3070	3290	3510	3730	3950	4170	4390	4610	4830
Number of Risers	12	13	14	15	16	17	18	19	20	21	22
Number of Treads Going	11	12	13	14	15	16	17	18	19	20	21
Going	330	360	390	420	450	480	510	540	570	600	630

12 Steps to Circle at 30'

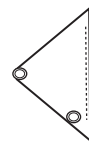


Landing Examples

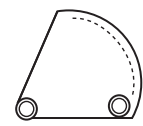
----- Dotted line denotes fixing face



Corner Triangle



Balcony Triangle



Round Triangle