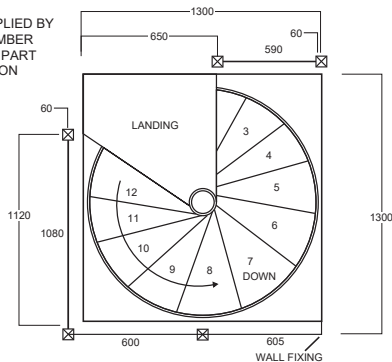
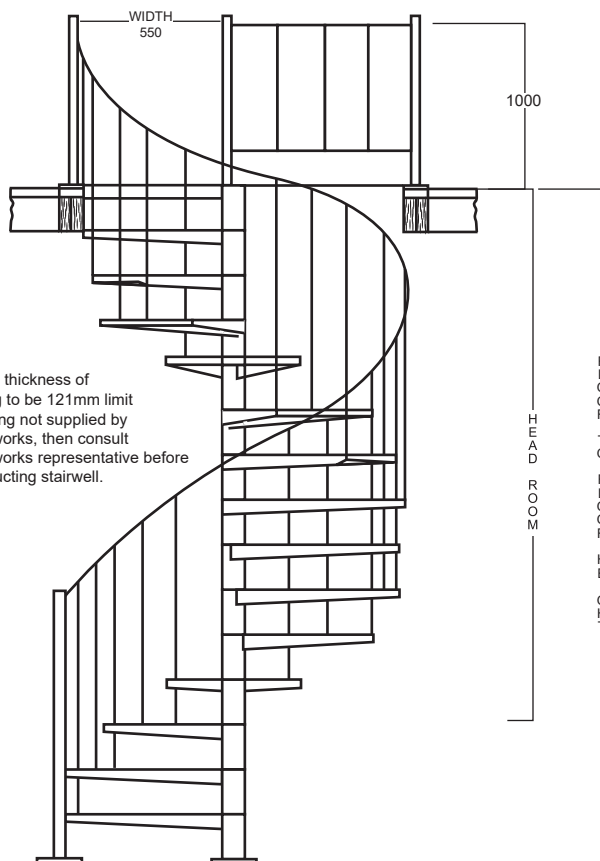


**FINISHED OPENING CIRCULAR OR SQUARE**

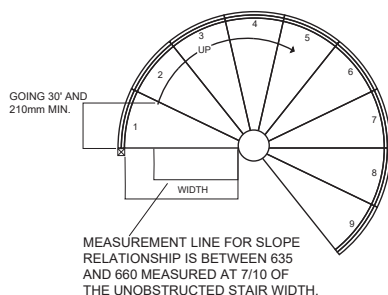
STEEL LANDING SUPPLIED BY SPIRALWORKS OR TIMBER LANDING BUILT IN AS PART OF STAIR INSTALLATION



**PLAN AT LANDING  
STANDARD STAIRWELL AND BALCONY RAILS**



Note: Overall thickness of landing to be 121mm limit. If landing not supplied by Spiralworks, then consult Spiralworks representative before constructing stairwell.



**MILD STEEL STAIR**

**7 c b g f i W j c b ' G d Y W j W j c b g / ' 7 c a d c b Y b g**

**7 Y b f Y ' 7 c ' i a b**

114.3 O.D X 4.5mm mild steel pipe.

**Treads & Risers**

4mm mild steel plate are laser cut and folded to uniform shape. Risers are between 205 - 220mm as determined by the floor to floor height. Width of treads free of obstruction 525mm. Anti slip tread pads are standard and are replaceable.

**Stair Handrail**

Handrail 38 x 5mm round, unbroken PVC. Balusters 19 x 1.6mm square tubing with a maximum spacing of 125mm. Handrail posts, top and bottom 40 x 40 x 1.6mm SHS Grade 450. Continuous uninterrupted handrail is provided on one side of stair with a minimum height above the tread nosing of 865mm.

**Balcony Railing**

End posts 40 x 40 x 1.6mm SHS Grade 450. Top rail 38 x 1.6mm round mild steel. Bottom rail in fills 19 x 1.6mm square tubing. Balcony rails are at a minimum height of 1000mm above floor. Balusters are spaced with maximum gap of 125mm.

**Stair Geometry**

Stair has risers between 205 - 220mm 12 steps to circle at 30 degrees. The going measured at 7/10ths of clear width is 220mm minimum. The slope relationship is between 635 & 660mm. Stair can be erected clockwise or anti clockwise and is mechanically joined on site.

**Headroom**

Using a standard 60 degree landing with a 95mm downturn with 205mm minimum riser clear headroom is 2100mm. Every 1mm added to riser, adds 12mm to headroom.

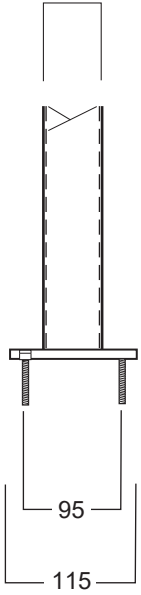
**Kit Form**

The stair & handrail are kit - form. There is no welding, cutting or grinding required. This allows for easy installation on any finished floor surface.

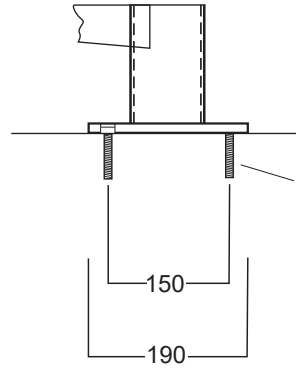
This system is covered by Registered Design No's: 157138 & 150823 and may not be manufactured or copied, without the written consent of Spiralworks Pty Ltd.

\*Stairs Comply with National Construction Code (NCC 2022) as a performance solution - refer to PBDB & PSR Template.

40 X 40 X 1.6 SHS Grade 450



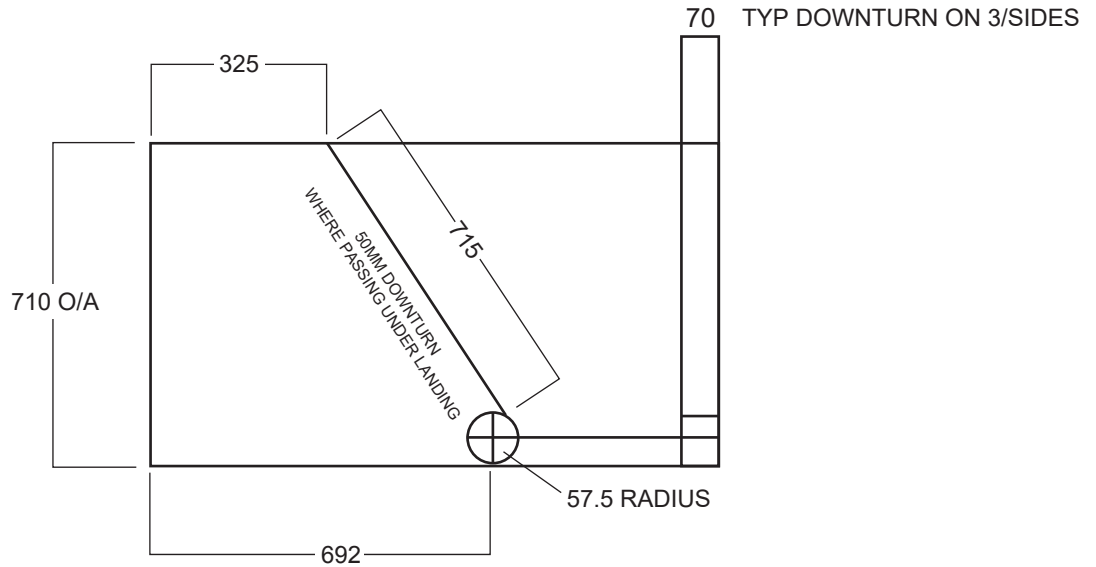
4 No. C'SK. SCREWBOLTS 75 X 8MM  
DRILL 8mm HOLE FOR MASONARY  
DRILL 7MM HOLE FOR TIMBER



4 No. C'SK. SCREWBOLTS 75 X 8MM  
on 150mm PCD  
DRILL 8mm HOLE FOR MASONARY  
DRILL 7MM HOLE FOR TIMBER

**BASE PLATE**

**HANDRAIL POST BASE**



**LANDING DETAIL**

EXAMPLES ONLY OF SETOUT - WE BUILD TO SUIT

1300 Diameter

205mm to 220mm Riser 12 Treads to Circle at 30'

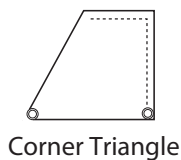
Floor to Floor Height	2630	2850	3070	3290	3510	3730	3950	4170	4390	4610	4830
Number of Risers	12	13	14	15	16	17	18	19	20	21	22
Number of Treads	11	12	13	14	15	16	17	18	19	20	21
Going	330	360	390	420	450	480	510	540	570	600	630

12 Steps to Circle at 30'

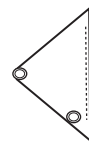


Landing Examples

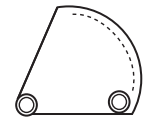
----- Dotted line denotes fixing face



Corner Triangle



Balcony Triangle



Round Triangle